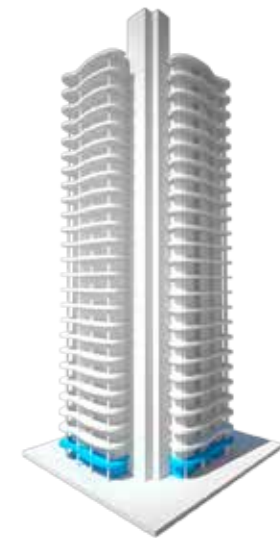


BOURDILLON
LAGOS

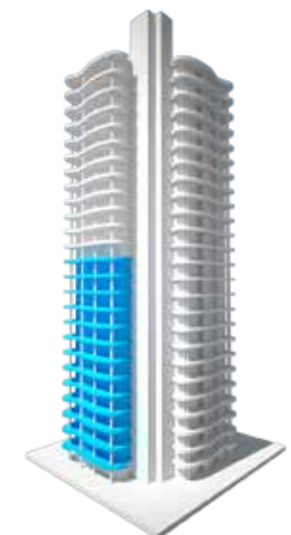
FLOOR PLANS

GROUND FLOOR



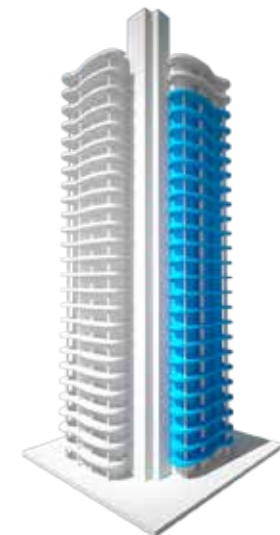
FLOORS 1-12

3-bedroom apartment 510 sqm



FLOORS 1-22

4-bedroom apartment 584 sqm





FLOORS 13-15-17-19-21

Duplex level 1





Both levels = 969 sqm

FLOORS 14-16-18-20-22

Duplex level 2



FLOOR 23

Penthouse 1 Level 1



FLOOR 24

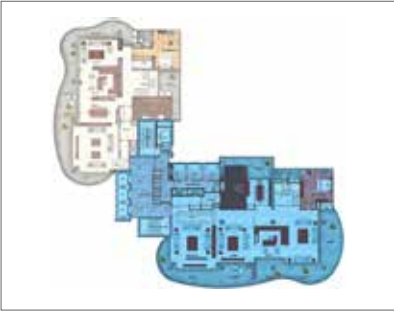
Penthouse 1 Level 2



Both levels = 967 sqm

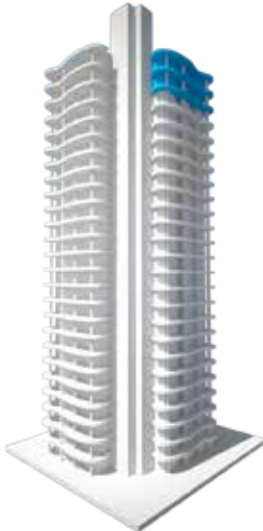
FLOOR 23

Penthouse 2 Level 1



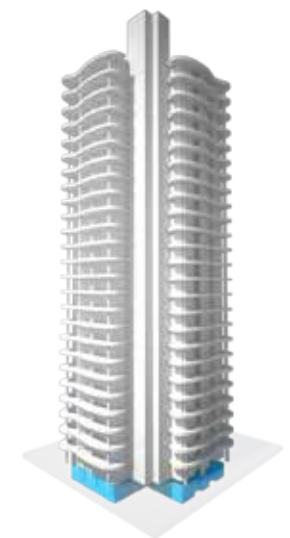
FLOOR 24

Penthouse 2 Level 2

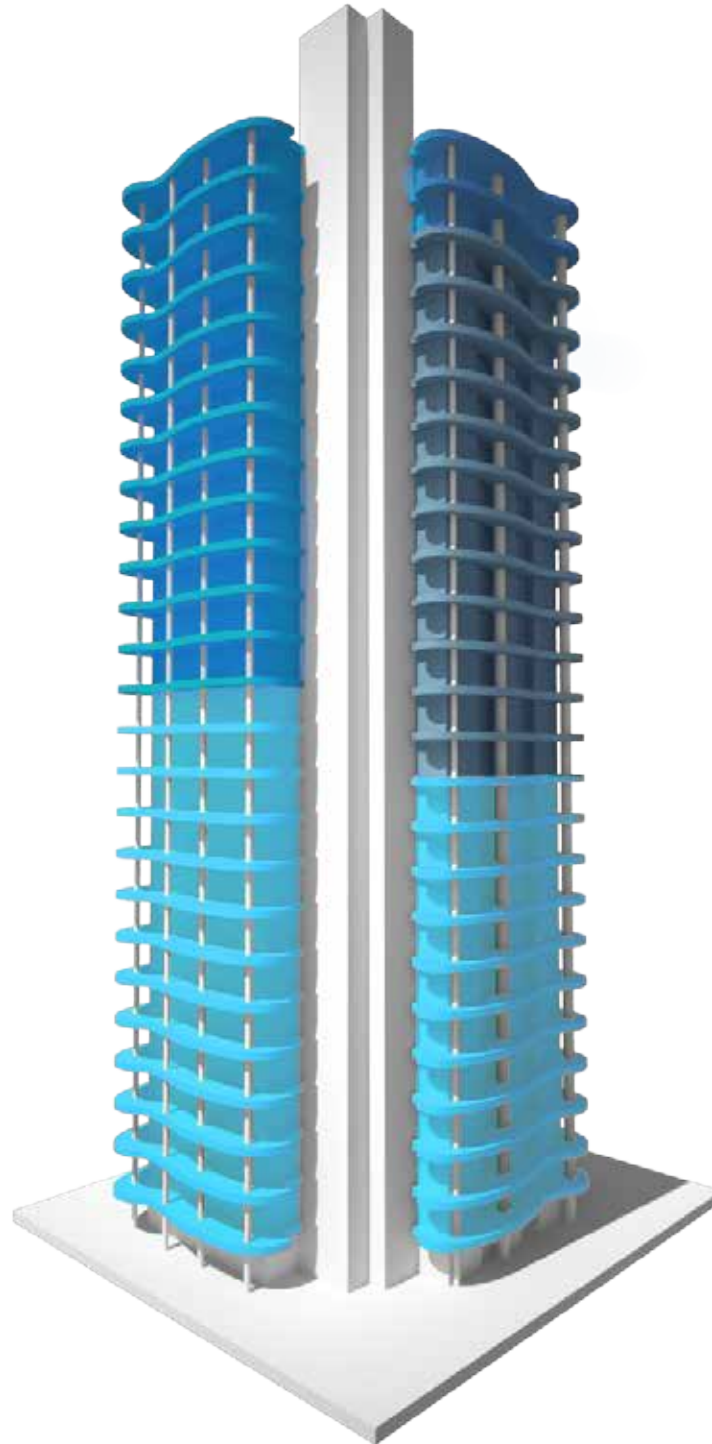





Both levels = 1137 sqm

BASEMENT



CAR PARK ALLOCATION



-  3 parking spaces
-  2 parking spaces
-  4 parking spaces